

Calibre No.

## 5216A

Jewels

23 j  
25 j

Style Name

⇒ Basic Calibre 5206A 23J Catalog No. 52-06-1



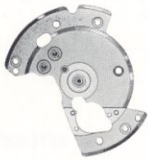
Cal. 5216A



### Characteristics

- Casing diameter : 25.60 φmm
- Maximum height : 4.20 mm
- Vibrations per hour : 28,800
- Automatic and auxiliary hand winding with sweep second
- Calendar (day & date)
- Instant setting device for day & date calendar
- Bilingual change-over system for day of week
- Second-setting device
- Micro-adjustor or outside micro-adjusting device
- Micro-adjusting device for flapping of hair spring
- "Diashock" Shock Resistant Device
- "Diafix" Oil Lubrication Device

Catalog No. 52-16-1



112 026



224 020



225 016



245 010



310 034



315 021



331 005



☆341 016



271 017



014 634



191 010



509 060



509 064



531 003



556 008



802 010



808 012



817 007



499 002



868 006



☆870 211



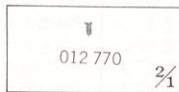
873 009



☆801 029



☆884 033  
☆884 037  
☆884 039  
☆884 041



012 770

2/1

Calibre No.		Jewels	Style Name	
<b>5216A</b>		<b>23 j</b> <b>25 j</b>		
⇨ Basic Calibre 5206A 23J Catalog No. 52-06-1				
PART NO.	PART NAME	PART NO.	PART NAME	
<b>112 026</b>	<b>Barrel &amp; train-wheel bridge (for 25j)</b>	015 161	Diafix upper hole jewel with frame for escape wheel	
112 038	Barrel & train-wheel bridge (for 23j)	011 221	Diafix upper cap jewel for escape wheel	
122 006	Center wheel bridge	014 417	Diafix upper spring for escape wheel	
161 008	Pallet cock	015 531	Diafix lower hole jewel with frame for escape wheel	
171 035	Balance cock (for outside micro-adjusting device)	011 221	Diafix lower cap jewel for escape wheel	
171 036	Balance cock	015 513	Diafix lower spring for escape wheel	
<b>191 010</b>	<b>Framework for automatic device (for 25j)</b>	429 001	Holding ring for second reduction wheel	
191 011	Framework for automatic device (for 23j)	<b>509 060</b>	<b>Oscillating weight with ball-bearing (for 23j)</b>	
201 054	Complete barrel with arbor & mainspring	<b>509 064</b>	<b>Oscillating weight with ball-bearing (for 25j)</b>	
<b>224 020</b>	<b>Center wheel with cannon pinion</b>	511 004	First reduction wheel	
<b>225 016</b>	<b>Cannon pinion</b>	514 003	Second reduction wheel	
231 012	Third wheel & pinion	<b>531 003</b>	<b>Differential wheel</b>	
241 016	Fourth wheel & pinion	848 003	First reverser idler	
<b>245 010</b>	<b>Sweep second pinion</b>	851 002	Second reverser idler	
251 018	Escape wheel & pinion	854 002	Snap for reverser idler	
261 009	Minute wheel	<b>556 008</b>	<b>Date finger</b>	
<b>271 017</b>	<b>Hour wheel</b>	☆ <b>801 029</b>	<b>Date dial</b>	
281 006	Setting wheel	<b>802 010</b>	<b>Date driving wheel</b>	
282 006	Clutch wheel	<b>808 012</b>	<b>Date dial guard</b>	
283 006	Winding pinion	809 001	Date jumper guard	
285 023	Ratchet wheel	810 003	Date jumper	
286 003	Sliding crown wheel	<b>817 007</b>	<b>Intermediate date wheel</b>	
301 012	Jewelled pallet fork & staff	<b>499 002</b>	<b>Day finger ring</b>	
<b>310 034</b>	<b>Balance complete with stud</b>	<b>868 006</b>	<b>Day finger</b>	
<b>315 021</b>	<b>Balance staff</b>	☆ <b>870 211</b>	<b>Day star with dial disk (English ↔ Japanese)</b>	
<b>331 005</b>	<b>Roller with jewel</b>	<b>873 009</b>	<b>Day jumper</b>	
<b>341 016</b>	<b>Regulator</b>	☆ <b>884 033</b>	<b>Holding ring for dial</b>	
344 002	Regulator adjusting device (for outside micro-adjusting device)	☆ <b>884 037</b>		
344 080	Regulator adjusting device	☆ <b>884 039</b>		
345 010	Stud holder	☆ <b>884 041</b>		
354 026	Winding stem	963 002	Snap for day star with dial disk	
361 002	Second-setting lever spring	981 001	Day-date corrector wheel rocker	
363 003	Sliding crown wheel spring	012 121	Stud screw	
381 007	Click	012 284	Barrel & train-wheel bridge screw	
☆383 012		012 284	Balance cock screw	
☆383 013	Setting lever	012 285	Center wheel bridge screw	
☆383 014		012 285	Pallet cock screw	
384 009	Yoke (Clutch lever)	012 354	Setting lever spring screw	
387 006	Minute wheel bridge with crown wheel & intermediate wheel for day correction	012 513	Ratchet wheel screw	
388 006	Setting lever spring	012 672	Click screw	
390 005	Setting lever axle	012 673	Friction spring screw for sweep second pinion	
391 006	Second-setting lever	012 677	Outside micro-adjusting screw (for outside micro-adjusting device)	
395 003	Micro-adjustor	012 679	Micro-adjustor screw (for outside micro-adjusting device)	
395 004	Micro-adjustor (for outside micro-adjusting device)	012 726	Casing clamp screw	
396 003	Friction spring for sweep second pinion	012 744	Framework screw for automatic device	
399 007	Casing clamp	012 753	Date dial guard screw (Gilt)	
468 001	Lower hole jewel with frame for pallet	012 753	Day jumper screw (Gilt)	
014 603	Diashock upper frame	<b>012 770</b>	<b>Date driving wheel screw (Date finger ring screw)</b>	
<b>014 634</b>	<b>Diashock lower frame</b>	<b>012 770</b>	<b>Date dial guard screw</b>	
014 605	Diashock hole jewel with frame	<b>012 770</b>	<b>Date jumper guard screw</b>	
011 221	Diashock cap jewel	<b>012 770</b>	<b>Day jumper screw</b>	
014 317	Diashock spring	<b>012 770</b>	— continued on next page —	
015 551	Diafix upper hole jewel with frame for fourth wheel			
011 221	Diafix upper cap jewel for fourth wheel			
014 417	Diafix upper spring for fourth wheel			

☆⇨ Please see remarks on the next page.

Part numbers in light letters are not shown in photos; those parts are interchangeable with the basic calibre  
(Cal. No. **5206A** 23J Catalog No. 52-06-1 Green page).



Calibre No.	<b>5216A</b>	Jewels	Style Name
		<b>23 j</b> <b>25 j</b>	
⇒ Basic Calibre 5206A 23J Catalog No. 52-06-1			

PART NO.	PART NAME	PART NO.	PART NAME
— continued —			
011 398	Upper hole jewel for barrel (for 25j)	013 024	Tube for setting lever spring screw
011 715	Upper hole jewel for center wheel	013 015	Tube for casing clamp screw
011 146	Lower hole jewel for center wheel	013 026	Tube for day-date corrector wheel rocker (Tube for date jumper guard screw)
011 540	Upper hole jewel for third wheel	013 481	Second reduction wheel pin
011 540	Lower hole jewel for third wheel	013 934	Micro-adjustor pin (for micro-adjustor)
011 541	Lower hole jewel for fourth wheel	013 975	Eccentric dial pin
011 546	Upper hole jewel for pallet	017 012	Tube for date driving wheel screw (Tube for day finger ring screw)
011 151	Upper hole jewel for first reduction wheel (for 25j)		
011 151	Lower hole jewel for first reduction wheel		
011 422	Upper hole jewel for differential wheel		
011 157	Lower hole jewel for differential wheel		

**Remarks :**

**Setting lever**

There are three types of setting levers. They are used according to the structure of cases and the dial diameter. Select a suitable one by the following procedures referring to the shapes indicated in Fig. 1.

In case of a one-piece water-resistant case, if an incorrect setting lever for dial diameter is used, the winding stem cannot be pulled out or the movement cannot be set in the case. Be careful for this point. (Refer to Fig. 2, Example of suitable setting lever)

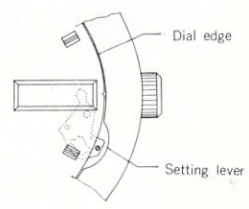
[Fig. 1]



☆ 383 012 ☆ 383 013 ☆ 383 014

- ☆ 383 012.....Used for one-piece water-resistant case with round dial of diameter 28.50 φmm.
- ☆ 383 013...
  - ① Used for one-piece water-resistant case with round dial of diameter 26.50 φmm.
  - ② Used for screw or snap back water-resistant case and non-water-resistant case.
- ☆ 383 014.....Used for one-piece water-resistant case with round dial of diameter 27.50 φmm.

[Fig. 2]



[Example of suitable setting lever]  
Tail of the setting lever is located between the dial and the case.

When the case is a square type water-resistant case or part number of the setting lever is unknown or when ordering setting levers other than the above, specify ① Cal. No. ② number of jewels ③ dial No. and ④ case No.

**Date dial**

- ☆ 801 029.....Used when both the crown and the date frame are located at 3 o'clock.
- If the date dial is required in any other type, specify ① Cal. No. ② number of jewels ③ the crown position ④ the date frame position and ⑤ the dial No.

**Day star with dial disk**

- ☆ 870 211(English ↔ Japanese).....Used when both the crown and the day frame are located at 3 o'clock.
- If the day star with dial disk is required in any other type, specify the number printed on the disk.

— continued on reverse page —

Calibre No.

**5216A**

Jewels

**23 j**  
**25 j**

Style Name

⇒ Basic Calibre 5206A 23J Catalog No. 52-06-1

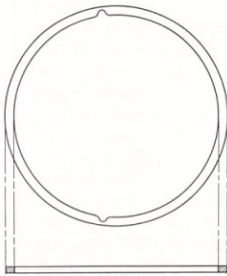
— continued —

**Holding ring for dial**

The holding ring for dial differs according to the design of the dial.  
Select the suitable one from the following sizes and types (as illustrated);

- ☆ 884 033.....**26.40**  $\phi$ mm outside diameter (Fig. 1)
- ☆ 884 037.....**28.15**  $\phi$ mm outside diameter (Fig. 2)
- ☆ 884 039.....**26.40**  $\phi$ mm outside diameter (Fig. 3)
- ☆ 884 041.....**29.15**  $\phi$ mm outside diameter (Fig. 2)

[Fig. 1]



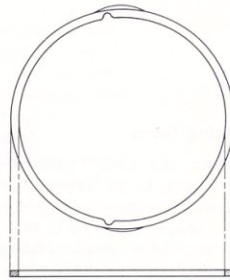
☆ 884 033

[Fig. 2]



☆ 884 037  
☆ 884 041

[Fig. 3]



☆ 884 039