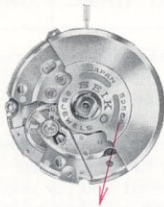


Calibre No. 5256A ⇨ Basic Calibre 5206A 23J Catalog No. 52-06-1	Jewels 25j	Style Name
--	----------------------	------------



Cal. 5256A



Characteristics

- Casing diameter : 25.60 φmm
- Maximum height : 4.20 mm
- Vibrations per hour : 28,800
- Automatic and auxiliary hand winding with sweep second
- Calendar (day & date)
- Instant setting device for day & date calendar
- Bilingual change-over system for day of week
- Second-setting device
- Micro-adjustor or outside micro-adjusting device
- Micro-adjusting device for flapping of hair spring
- "Diashock" Shock Resistant Device
- "Diafix" Oil Lubrication Device



112 026



224 020



225 016



245 010



310 034



315 021



331 005



☆341 016



271 017



014 634



191 010



509 066



531 003



556 008



☆801 029



802 010



808 012



817 007



499 002



868 006



☆870 211



873 009



☆884 033

☆884 037

☆884 039

☆884 041

012 770
 $\frac{2}{1}$

Calibre No.		Jewels	Style Name	
5256A		25j		
⇨ Basic Calibre 5206A 23J Catalog No. 52-06-1				
PART NO.	PART NAME	PART NO.	PART NAME	
112 026	Barrel & train-wheel bridge	011 221	Diafix upper cap jewel for escape wheel	
122 006	Center wheel bridge	014 417	Diafix upper spring for escape wheel	
161 009	Pallet cock	015 531	Diafix lower hole jewel with frame for escape wheel	
171 035	Balance cock (for outside micro-adjusting device)	011 221	Diafix lower cap jewel for escape wheel	
171 036	Balance cock	015 513	Diafix lower spring for escape wheel	
191 010	Framework for automatic device	429 001	Holding ring for second reduction wheel	
201 054	Complete barrel with arbor & mainspring	509 066	Oscillating weight with ball-bearing	
224 020	Center wheel with cannon pinion	511 004	First reduction wheel	
225 016	Cannon pinion	514 003	Second reduction wheel	
231 012	Third wheel & pinion	531 033	Differential wheel	
241 016	Fourth wheel & pinion	848 003	First reverser idler	
245 010	Sweep second pinion	851 002	Second reverser idler	
251 018	Escape wheel & pinion	854 002	Snap for reverser idler	
261 009	Minute wheel	556 008	Date finger	
271 017	Hour wheel	☆ 801 029	Date dial	
281 006	Setting wheel	802 010	Date driving wheel	
282 006	Clutch wheel	808 012	Date dial guard	
283 006	Winding pinion	809 001	Date jumper guard	
285 023	Ratchet wheel	810 003	Date jumper	
286 003	Sliding crown wheel	817 007	Intermediate date wheel	
301 012	Jewelled pallet fork & staff	499 002	Day finger ring	
310 034	Balance complete with stud	868 006	Day finger	
315 021	Balance staff	☆ 870 211	Day star with dial disk (English ↔ Japanese)	
331 005	Roller with jewel	873 009	Day jumper	
341 016	Regulator	☆ 884 033	Holding ring for dial	
344 002	Regulator adjusting device (for outside micro-adjusting device)	☆ 884 037		
344 080	Regulator adjusting device	☆ 884 039		
345 010	Stud holder	☆ 884 041		
354 026	Winding stem	963 002		
361 002	Second-setting lever spring	981 001	Snap for day star with dial disk	
363 003	Sliding crown wheel spring	012 121	Day-date corrector wheel rocker	
381 007	Click	012 284	Stud screw	
☆ 383 012		012 284	Barrel & train-wheel bridge screw	
☆ 383 013	Setting lever	012 285	Balance cock screw	
☆ 383 014		012 285	Center wheel bridge screw	
384 009	Yoke (Clutch lever)	012 354	Pallet cock screw	
387 006	Minute wheel bridge with crown wheel & intermediate wheel for day correction	012 513	Setting lever spring screw	
388 006	Setting lever spring	012 672	Ratchet wheel screw	
390 005	Setting lever axle	012 673	Click screw	
391 006	Second-setting lever	012 673	Friction spring screw for sweep second pinion	
395 003	Micro-adjustor	012 677	Outside micro-adjusting screw (for outside micro-adjusting device)	
395 004	Micro-adjustor (for outside micro-adjusting device)	012 679	Micro-adjustor screw (for outside micro-adjusting device)	
396 003	Friction spring for sweep second pinion	012 726	Casing clamp screw	
399 007	Casing clamp	012 744	Framework screw for automatic device	
468 001	Lower hole jewel with frame for pallet	012 753	Date dial guard screw (Gilt)	
014 603	Diashock upper frame	012 753	Day jumper screw (Gilt)	
014 634	Diashock lower frame	012 770	Date driving wheel screw (Date finger ring screw)	
014 605	Diashock hole jewel with frame	012 770	Date dial guard screw	
011 221	Diashock cap jewel	012 770	Date jumper guard screw	
014 317	Diashock spring	012 770	Day jumper screw	
015 551	Diafix upper hole jewel with frame for fourth wheel			
011 221	Diafix upper cap jewel for fourth wheel			
014 417	Diafix upper spring for fourth wheel			
015 161	Diafix upper hole jewel with frame for escape wheel			

— continued on next page —

☆⇨ Please see remarks on the next page.

Part numbers in light letters are not shown in photos; those parts are interchangeable with the basic calibre
(Cal. No. **5206A** 23J Catalog No. 52-06-1 Green page).

Calibre No. 5256A	Jewels 25j	Style Name
⇒ Basic Calibre 5206A 23J Catalog No. 52-06-1		

PART NO.	PART NAME	PART NO.	PART NAME
	— continued —		
011 398	Upper hole jewel for barrel	013 024	Tube for setting lever spring screw
011 715	Upper hole jewel for center wheel	013 025	Tube for casing clamp screw
011 146	Lower hole jewel for center wheel	013 026	Tube for day-date corrector wheel rocker (Tube for date jumper guard screw)
011 540	Upper hole jewel for third wheel	013 481	Second reduction wheel pin
011 540	Lower hole jewel for third wheel	013 934	Micro-adjustor pin (for micro-adjustor)
011 541	Lower hole jewel for fourth wheel	013 975	Eccentric dial pin
011 546	Upper hole jewel for pallet	017 012	Tube for date driving wheel screw (Tube for day finger ring screw)
011 151	Upper hole jewel for first reduction wheel		
011 151	Lower hole jewel for first reduction wheel		
011 422	Upper hole jewel for differential wheel		
011 157	Lower hole jewel for differential wheel		

Remarks :

Setting lever

There are three types of setting levers. They are used according to the structure of case and the dial diameter. Select a suitable one by the following procedures referring to the shapes indicated in Fig. 1.

In case of a one-piece water-resistant case, if an incorrect setting lever for dial diameter is used, the winding stem cannot be pulled out or the movement cannot be set in the case.

Be careful for this point. (Refer to Fig. 2, Example of suitable setting lever)

☆383 012.....Used for one-piece water-resistant case with round dial of diameter 28.50 φmm.

☆383 013... {
 ① Used for one-piece water-resistant case with round dial of diameter 26.50 φmm.
 ② Used for screw or snap back water-resistant case and non-water-resistant case.

☆383 014.....Used for one-piece water-resistant case with round dial of diameter 27.50 φmm.

When the case is a square type water-resistant case or parts number of the setting lever is unknown or when ordering setting levers other than the above, specify ① Cal. No. ② number of jewels ③ dial No. and ④ case No.

Date dial

☆801 029.....Used when both the crown and the date frame are located at **3** o'clock.

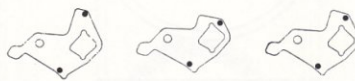
If the date dial is required in any other type, specify ① Cal. No. ② number of jewels ③ the crown position ④ the date frame position and ⑤ the dial. No.

Day star with dial disk

☆870 211(English ↔ Japanese).....Used when both the crown and the day frame are located at **3** o'clock.

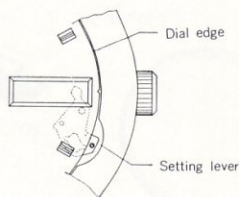
If the day star with disk is required in any other type, specify the number printed on the disk.

[Fig. 1]



☆383 012 ☆383 013 ☆383 014

[Fig. 2]



[Example of suitable setting lever]
 Tail of the setting lever is located between the dial and the case.

— continued on reverse page —

Calibre No.

5256A

Jewels

25j

Style Name

⇒ Basic Calibre 5206A 23J Catalog No. 52-06-1

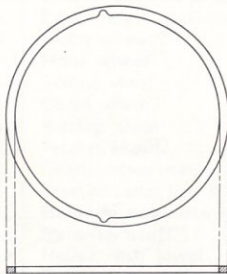
— continued —

Holding ring for dial

The holding ring for dial differs according to the design of the dial. Select the suitable one from the following sizes and types (as illustrated);

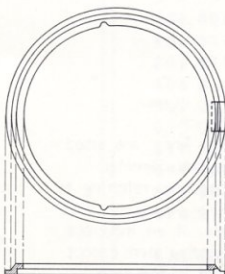
- ☆ 884 033..... **26.40** ϕ mm outside diameter (Fig. 1)
- ☆ 884 037..... **28.15** ϕ mm outside diameter (Fig. 2)
- ☆ 884 039..... **26.40** ϕ mm outside diameter (Fig. 3)
- ☆ 884 041..... **29.15** ϕ mm outside diameter (Fig. 2)

[Fig. 1]



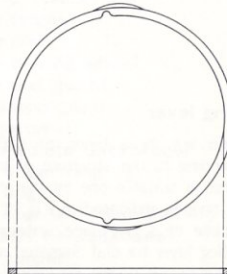
☆ 884 033

[Fig. 2]



☆ 884 037
☆ 884 041

[Fig. 3]



☆ 884 039