

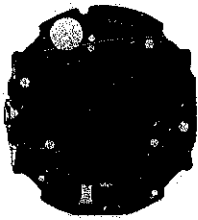
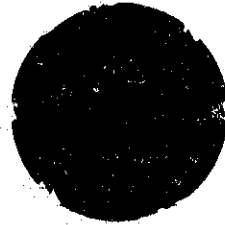
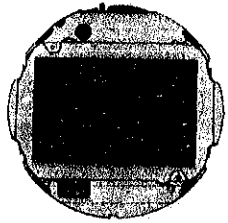
**SEIKO**

**DIGITAL QUARTZ**

**Cal. A927A**

**PARTS  
CATALOGUE**

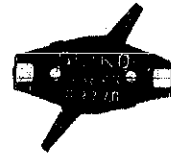
# Cal. A927A



4001 806



4216 795



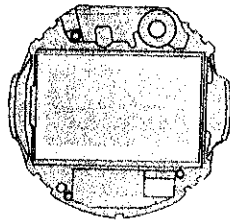
4225 807



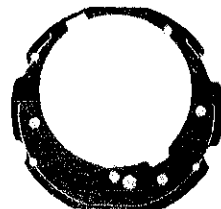
4270 795



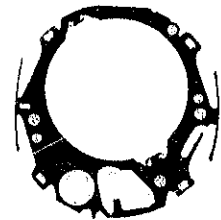
4313 795



4398 795



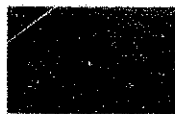
4410 795



4457 795



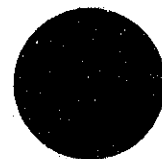
☆ 4510 815



4521 840



4530 230



☆ National BR2016

# Cal. A927A

## Characteristics

Casing diameter :  $\phi$  28.1 mm  
 Maximum height : 4.9 mm  
 Frequency of quartz crystal oscillator : 32,768 Hz (Hz=Hertz . . . . Cycles per second)  
 Time and calendar display : Hour, minute, second, date and day of the week can be displayed in 12-hour or 24-hour indication.  
 (The month is displayed only when the calendar is adjusted.)  
 Stopwatch display : Digital display system showing 12-hour, minute, second and 1/100 second.  
 Display medium : Nematic Liquid Crystal, FE-Mode.  
 Regulation system : Trimmer condenser  
 Illuminating light : Illuminates all the digital displays in the dark by depressing the light button.

PART NO.	PART NAME	PART NO.	PART NAME
4001 806	Circuit block		
4216 795	Insulator for circuit		
4225 807	Battery clamp		
4270 795	Battery connection (—)		
4313 795	Connector		
4398 795	Liquid crystal panel frame		
4410 795	Circuit cover		
4457 795	Circuit block cover		
☆4510 815	Liquid crystal panel		
4521 840	Reflecting mirror		
4530 230	Bulb		
☆National BR2016 } ☆Maxell CR2016 }	Lithium battery		

### Remarks :

#### Liquid crystal panel

☆4510 815.....Be sure that the combination between the color of panel cover and Liquid crystal panel should be matched according to the "SEIKO Quartz Casing Parts Catalogue".

#### Battery

☆National BR2016 } .....The substitutive battery might be added to the applied battery in the future.  
 ☆Maxell CR2016 } In that case please refer to separate "BATTERY LIST FOR SEIKO QUARTZ WATCHES".

☆☐Please see remarks.

Part numbers in light letters are not shown in photos.