

Calibre de base  
**240**

**Réveil 8 jours à sonnerie automatique „RECITAL“**  
**8-days clock with automatic alarm „RECITAL“**

Mouvement 8 jours, exécution en 7 et 15 pierres.  
Balancier annulaire - 18 000 alternances/heure.  
1 sonnerie automatique par 24 heures.  
Arrêt manuel instantané à déblocage automatique.  
Remontage mouvement et sonnerie par une seule clé.  
Dispositif de mise hors service de la sonnerie.

Hauteur totale 14,50 mm  
Diamètre platine 42,90 mm

*8-days movement, execution in 7 or 15 jewels.  
Annular balance - 18 000 vibrations per hour.  
Automatic alarm working once every 24 hours.  
Hand-operated instantaneous alarm-stop with automatic release.*

*Movement and alarm wound by means of a single key.*

*Device for putting the alarm mechanism out of use.*

*Total height 14,50 mm  
Plate diameter 42,90 mm*

Calibre dérivé  
**245**

**Mouvement 8 jours, sans sonnerie**  
**Movement 8 days, without alarm**

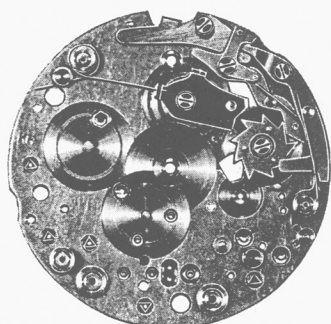
Mêmes fournitures de base et dimensions que le cal. 240  
Ex.: 7 et 15 pierres

*Same base-parts and dimensions of cal. 240  
Ex.: 7 and 15 jewels*



**Pour faciliter le rhabillage, 4 sous-ensembles sont livrables prêts à l'utilisation**

**To make repairing easier, 4 pre-assembled units are available**



## Cal. 240

### Sous-ensemble platine

RÉFÉRENCE : 20/7

Exécution pour mouvement 7 pierres

RÉFÉRENCE : 20/15

Exécution pour mouvement 15 pierres

Livré avec les principales pièces du mécanisme de sonnerie montées. Admet le montage des autres pièces du mécanisme, ancienne et nouvelle exécutions. Voir pages 6 et 7.

N° de cal. gravé sur la platine: 240 R

### Pre-assembled plate

REFERENCE: 20/7

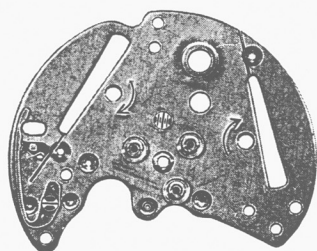
Type for 7-jewels movement

REFERENCE: 20/15

Type for 15-jewels movement

Supplied with the main parts of the alarm mechanism ready-fitted. The other parts of the mechanism, both the old and the new types, can be fitted. See pages 6 and 7.

Caliber number engraved on plate: 240 R



## Cal. 240

### Sous-ensemble 3/4 platine

RÉFÉRENCE : 21/7

Exécution pour mouvement 7 pierres

RÉFÉRENCE : 21/15

Exécution pour mouvement 15 pierres

### Pre-assembled 3/4 plate

REFERENCE: 21/7

Type for 7-jewels movement

REFERENCE: 21/15

Type for 15-jewels movement



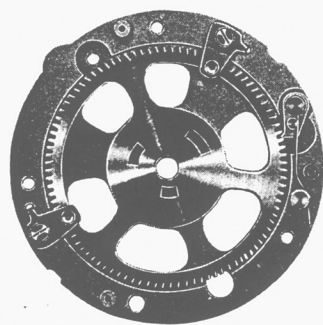
## Cal. 240-245

### Sous-ensemble coq

RÉFÉRENCE : 22

### Pre-assembled balance cock

REFERENCE: 22



## Cal. 240

### Sous-ensemble pont de roue de déclenchement

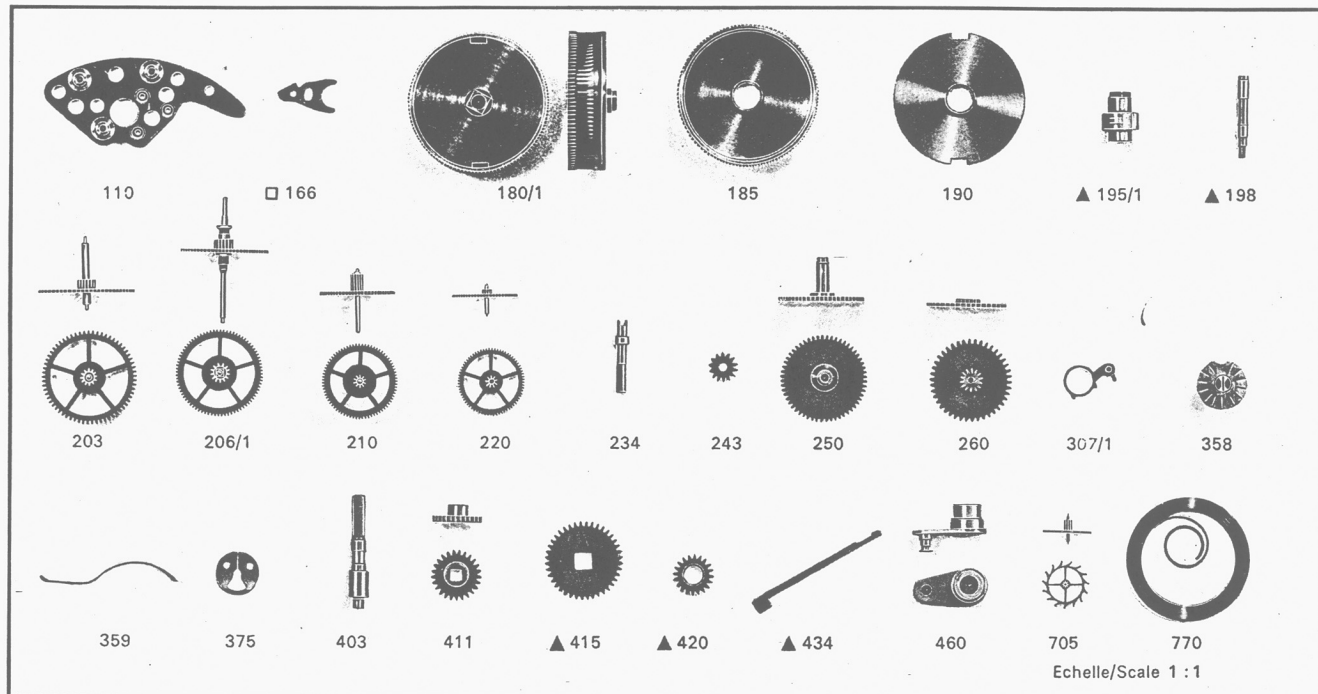
RÉFÉRENCE : 23

### Pre-assembled unlocking wheel bridge

REFERENCE: 23

## Fournitures du mouvement

## Movement parts



- 110 Pont de rouage  
**Important:** préciser exécution pour mouvement 7 ou 15 pierres
- 166 Bride de fixation
- 180/1 Barillet mouvement complet avec ressort
- 185 Tambour de barillet mouvement
- 190 Couvercle de barillet mouvement
- ▲ 195/1 Arbre de barillet percé, mouvement et sonnerie
- ▲ 198 Axe de barillet fileté, mouvement et sonnerie
- 203 Roue intermédiaire mouvement
- 206/1 Roue de centre percée avec axe
- 210 Roue moyenne
- 220 Roue de seconde
- 234 Rallonge d'axe de roue de centre
- 243 Chaussée non lanternée
- 250 Roue des heures
- 260 Roue de minuterie (12 h.)  
Roue de minuterie (24 h.) voir page 7
- 307/1 Raquette pour porte-piton mobile
- 358 Régulateur de raquette
- 359 Ressort régulateur de raquette
- 375 Clavette du régulateur de raquette
- 403 Tige pour remontoir à clé
- 411 Pignon de remontoir avec trou carré
- ▲ 415 Rochet mouvement et sonnerie
- ▲ 420 Roue de couronne mouvement et interm. sonnerie
- ▲ 434 Cliquet-ressort mouvement et sonnerie
- 460 Bascule de roue de couronne
- 705 Roue d'incré pivotée
- 770 Ressort de barillet mouvement avec bride

□ 2 par mouvement pour cal. 240 et 245

▲ 2 par mouvement pour cal. 240

### Pierres

#### Exécution - 15 pierres

- 605 Pierre de roue moyenne sus et sous
- 610 Pierre de roue de seconde sus et sous
- 615 Pierre de roue d'ancre sus et sous
- 620 Pierre d'ancre sus et sous

### Bouchons

#### Exécution - 7 et 15 pierres

- 678 Bouchon de roue intermédiaire mouvement sus et sous et sonnerie sus
- 7654 Bouchon de roue de sonnerie sus et sous
- 7656 Bouchon de marteau de sonnerie sus et sous
- 7659 Bouchon de roue intermédiaire de sonnerie sous

### Bouchons

#### Exécution - 7 pierres

- 653 Bouchon de roue moyenne sus et sous
- 655 Bouchon de roue de seconde sus et sous
- 694 Bouchon de roue d'ancre sus et sous
- 696 Bouchon d'ancre sus et sous

- 110 Train wheel bridge  
**Important:** state the movement has 7 or 15 jewels

- 166 Casing clamp
- 180/1 Barrel movement complete (with mainspring)
- 185 Movement barrel drum
- 190 Movement barrel cover
- ▲ 195/1 Movement and alarm drilled barrel arbor
- ▲ 198 Movement and alarm threaded axle for barrel
- 203 Movement intermediate wheel and pinion
- 206/1 Center wheel drilled, with spindle
- 210 Third wheel and pinion
- 220 Fourth wheel and pinion
- 234 Center arbor extension
- 243 Cannon pinion without clam notch
- 250 Hour wheel
- 260 Minute wheel (12 h.)  
Minute wheel (24 h.) see page 7
- 307/1 Regulator for adjustable stud holder
- 358 Adjuster for regulator
- 359 Regulator spring
- 375 Regulator adjuster gib
- 403 Stem for key winding
- 411 Winding pinion with square hole
- ▲ 415 Movement and alarm ratchet wheel
- ▲ 420 Movement crown wheel and alarm interm. crown wheel
- ▲ 434 Movement and alarm clicking spring
- 460 Crown wheel rocker
- 705 Escape wheel and pinion
- 770 Mainspring with bridle (movement)

□ 2 for each movement cal. 240 and 245

▲ 2 for each movement cal. 240

### Jewels

#### Execution - 15 jewels

- 605 Jewel for third wheel, upper and lower
- 610 Jewel for fourth wheel, upper and lower
- 615 Jewel for escape wheel, upper and lower
- 620 Jewel for pallet staff, upper and lower

### Bushings

#### Execution - 7 and 15 jewels

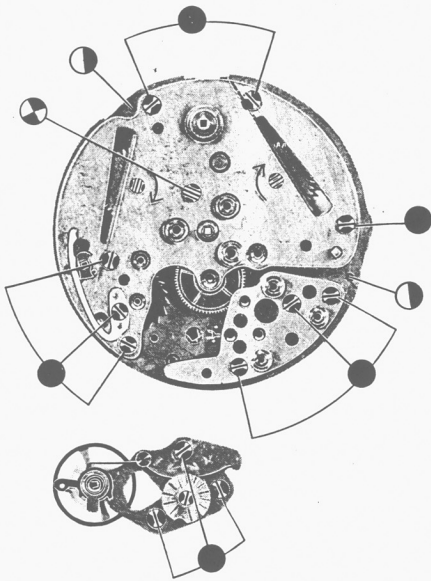
- 678 Bushing for movement intermediate wheel, upper and lower, and alarm, upper
- 7654 Bushing for alarm wheel, upper and lower
- 7656 Bushing for alarm hammer, upper and lower
- 7659 Bushing for alarm intermediate wheel, lower

### Bushings

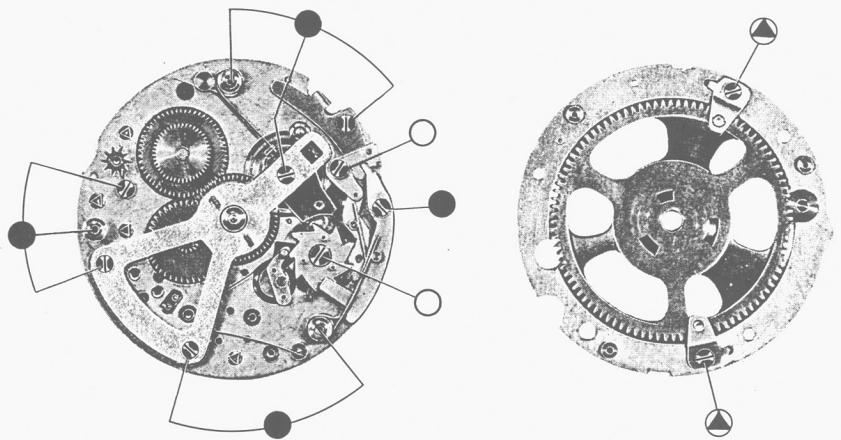
#### Execution - 7 jewels

- 653 Bushing for third wheel, upper and lower
- 655 Bushing for fourth wheel, upper and lower
- 694 Bushing for escape wheel, upper and lower
- 696 Bushing for pallet staff, upper and lower

## Visserie



## Screws



Echelle/Scale 3 : 1

5106	5166	57246	57315	57428

	Nombre de vis			
	Cal. 245	Cal. 240		
5106	13	21		
5166			2	2
57246				
57315			2	2
57428				

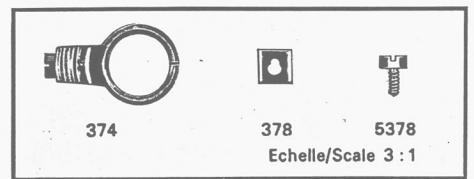
	Number of screws			
	Cal. 245	Cal. 240		
5106	13	21		
5166			2	2
57246				
57315			2	2
57428				

### Porte-spiral « Spirotor »

- 374 Porte-spiral Spirotor (livré avec fournitures 378 et 5378 montées)
- 378 Fixe-spiral
- 5378 Vis de fixe-spiral

### « Spirotor » hairspring holder

- 374 Spirotor hairspring holder (supplied with parts 378 and 5378 fitted)
- 378 Hairspring fastener
- 5378 Screw for hairspring fastener

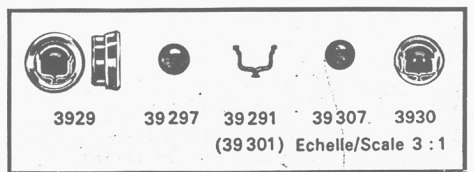


### Chaton « Duofix » pour balancier

- 3929 Bloc Duofix complet pour coq
- 39297 Contre-pivot coq
- 39291 Clavette Duofix coq et platine
- 39307 Pierre Duofix pour platine
- 3930 Bloc Duofix complet pour platine

### « Duofix » in-setting for balance

- 3929 Block Duofix complete for balance cock
- 39297 Endstone for balance cock
- 39291 Duofix spring for balance cock and plate
- 39307 Jewel Duofix for plate
- 3930 Block Duofix complete for plate

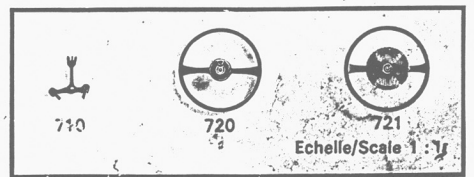


### Ancre-balancier

- 710 Ancre montée
- 720 Balancier pivoté avec plateau
- 721 Balancier avec spiral plat

### Pallets-balance

- 710 Jewelled pallet fork and staff
- 720 Balance with roller, pivoted
- 721 Balance with flat hairspring, regulated





# Mécanisme de sonnerie

## Alarm mechanism

LE COULTRE



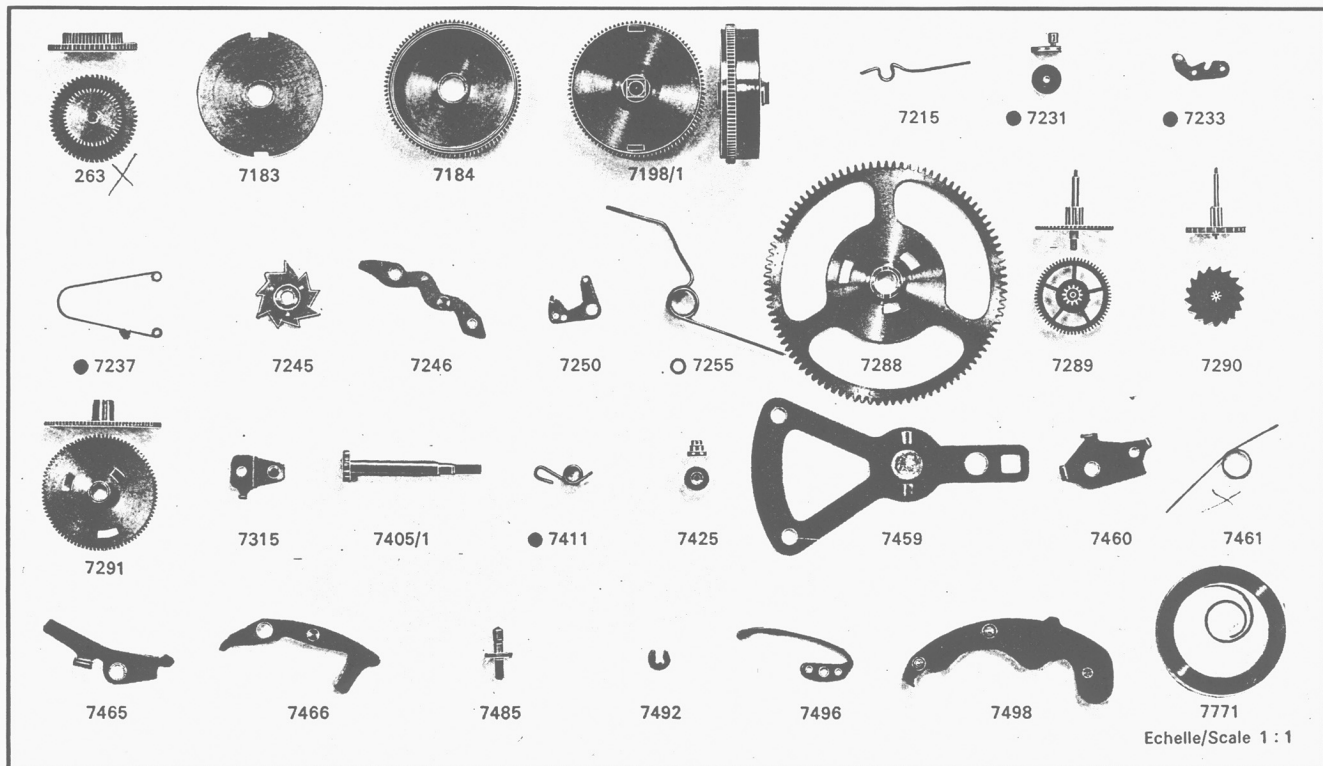
### Cal. 240/2

**Mécanisme de sonnerie, nouvelle exécution simplifiée**

Les mouvements équipés de ce nouveau mécanisme portent le numéro **240/2** gravé sur la platine (voir page 2). Pour toutes commandes de fournitures, **indiquer avec précision ce numéro.**

**Alarm mechanism, new simplified construction**

Movements fitted with this new mechanism bear the number **240/2** engraved on the plate (see page 2). **This number must be correctly stated on all orders for repair material.**



- |        |  |        |   |
|--------|--|--------|---|
| 263    | Roue de minuterie (24 h.)  | 263    | Minute wheel (24 h.)                                |
| 7183   | Couvercle de barillet de sonnerie  | 7183   | Alarm barrel cover                                  |
| 7184   | Tambour de barillet de sonnerie  | 7184   | Alarm barrel drum                                   |
| 7198/1 | Barillet de sonnerie complet (avec ressort)                              | 7198/1 | Alarm barrel, complete (with mainspring)            |
| 7215   | Ressort du cliquet de roue de déclenchement                              | 7215   | Spring for unlocking wheel click                    |
| ● 7231 | Entraîneur du cliquet-poussoir   | ● 7231 | Driver for pusher-click                             |
| ● 7233 | Cliquet-poussoir de l'étoile-commande sonnerie                           | ● 7233 | Pusher-click for alarm control star                 |
| ● 7237 | Ressort du cliquet-poussoir de l'étoile-commande de sonnerie             | ● 7237 | Spring for pusher-click of alarm control star       |
| 7245   | Etoile-commande de sonnerie  | 7245   | Alarm control star                                  |
| 7246   | Sautoir de l'étoile-commande de sonnerie                                 | 7246   | Alarm control star jumper                           |
| 7250   | Lève-sautoir   | 7250   | Lifting piece for jumper                            |
| ○ 7255 | Ressort du levier d'arrêt de sonnerie et du sautoir de l'étoile-commande | ○ 7255 | Spring for alarm stop lever and control star jumper |
| 7288   | Roue de déclenchement  | 7288   | Unlocking wheel                                     |
| 7289   | Roue intermédiaire de sonnerie   | 7289   | Intermediate wheel for alarm                        |
| 7290   | Roue de sonnerie   | 7290   | Alarm wheel   |
| 7291   | Roue d'enclenchement   | 7291   | Interlocking wheel                                  |
| 7315   | Ressort de friction de roue de déclenchement                             | 7315   | Friction spring for unlocking wheel                 |
| 7405/1 | Tige de mise à l'heure de sonnerie                                       | 7405/1 | Alarm setting stem                                  |
| ● 7411 | Ressort de tige de mise à l'heure de sonnerie                            | ● 7411 | Spring for alarm setting stem                       |
| 7425   | Noyau de roue de couronne intermédiaire de sonnerie                      | 7425   | Intermediate crown wheel core for alarm             |
| 7459   | Déclencheur  | 7459   | Disconnecter  |
| 7460   | Levier-déclencheur   | 7460   | Disconnecting lever                                 |
| 7461   | Ressort du levier-déclencheur  | 7461   | Disconnecting lever spring                          |
| 7465   | Commande du levier d'arrêt de sonnerie                                   | 7465   | Control piece for alarm stop lever                  |
| 7466   | Levier d'arrêt de sonnerie   | 7466   | Alarm stop lever                                    |
| 7485   | Commande du verrou de sonnerie   | 7485   | Alarm bolt lever                                    |
| 7492   | Clavette de la commande du verrou de sonnerie                            | 7492   | Alarm bolt lever gib                                |
| 7496   | Verrou de sonnerie   | 7496   | Alarm bolt  |
| 7498   | Marteau de sonnerie  | 7498   | Alarm hammer  |
| 7771   | Ressort de barillet de sonnerie (avec bride)                             | 7771   | Alarm mainspring (with bridle)                      |

**Pour:** Arbre de barillet sonnerie  
 Axe de barillet sonnerie  
 Cliquet-ressort sonnerie  
 Couronne intermédiaire sonnerie  
 Rochet de sonnerie

Voir fournitures mouvement  
 See movement parts

**For:** Alarm drilled barrel arbor  
 Alarm threaded axle for barrel  
 Alarm clicking spring  
 Intermediate crown wheel for alarm  
 Alarm ratchet wheel

● Ces fournitures n'existent pas dans les mécanismes de sonnerie des cal. 240-240/1. Voir page 6.  
 ○ Pour emploi sur calibres 240 et 240/1, voir page 6.

● These parts do not exist in the alarm mechanisms, of cal. 240-240/1. See page 6.  
 ○ For use on calibres 240 and 240/1, see page 6.

# Mécanisme de sonnerie

## Alarm mechanism

LE COULTRE



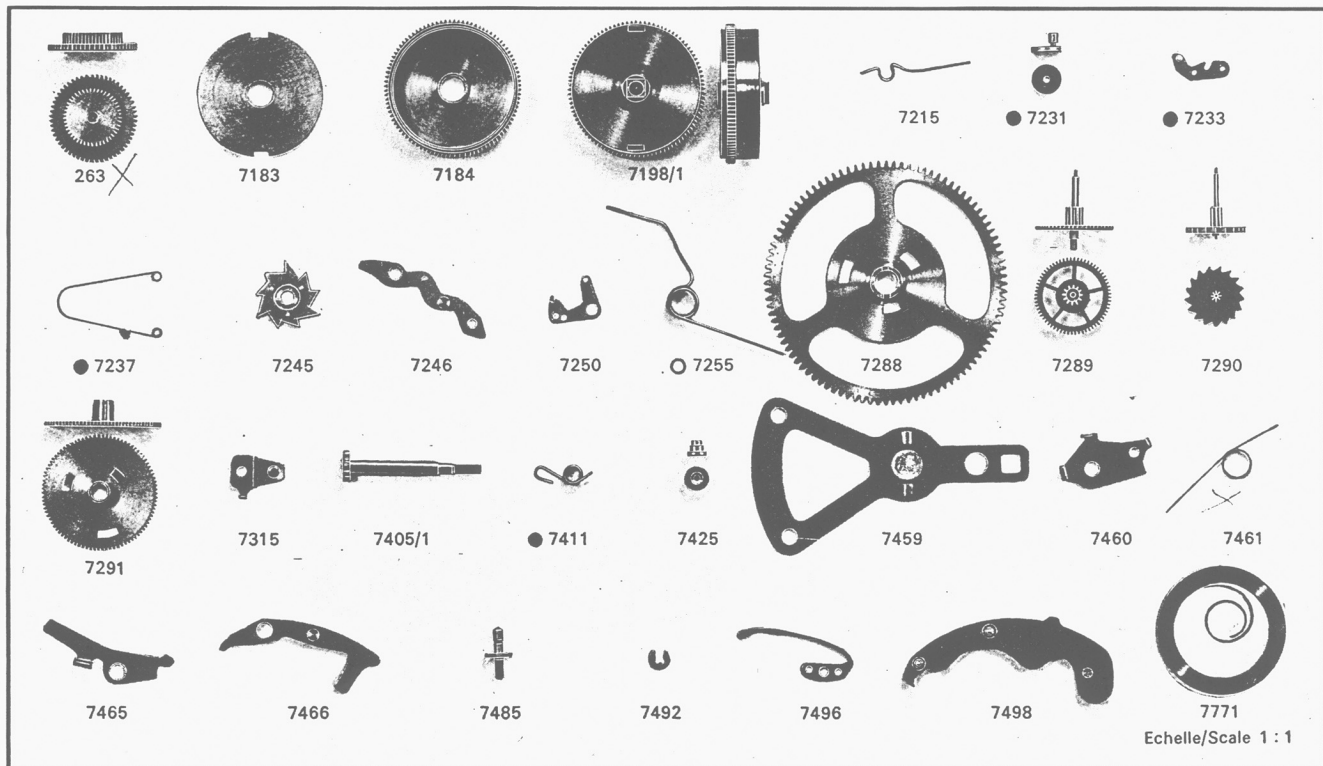
### Cal. 240/2

**Mécanisme de sonnerie, nouvelle exécution simplifiée**

Les mouvements équipés de ce nouveau mécanisme portent le numéro **240/2** gravé sur la platine (voir page 2). Pour toutes commandes de fournitures, **indiquer avec précision ce numéro.**

**Alarm mechanism, new simplified construction**

Movements fitted with this new mechanism bear the number **240/2** engraved on the plate (see page 2). **This number must be correctly stated on all orders for repair material.**



- |        |  |        |   |
|--------|--|--------|---|
| 263    | Roue de minuterie (24 h.)  | 263    | Minute wheel (24 h.)                                |
| 7183   | Couvercle de barillet de sonnerie  | 7183   | Alarm barrel cover                                  |
| 7184   | Tambour de barillet de sonnerie  | 7184   | Alarm barrel drum                                   |
| 7198/1 | Barillet de sonnerie complet (avec ressort)                              | 7198/1 | Alarm barrel, complete (with mainspring)            |
| 7215   | Ressort du cliquet de roue de déclenchement                              | 7215   | Spring for unlocking wheel click                    |
| ● 7231 | Entraîneur du cliquet-poussoir   | ● 7231 | Driver for pusher-click                             |
| ● 7233 | Cliquet-poussoir de l'étoile-commande sonnerie                           | ● 7233 | Pusher-click for alarm control star                 |
| ● 7237 | Ressort du cliquet-poussoir de l'étoile-commande de sonnerie             | ● 7237 | Spring for pusher-click of alarm control star       |
| 7245   | Etoile-commande de sonnerie  | 7245   | Alarm control star                                  |
| 7246   | Sautoir de l'étoile-commande de sonnerie                                 | 7246   | Alarm control star jumper                           |
| 7250   | Lève-sautoir   | 7250   | Lifting piece for jumper                            |
| ○ 7255 | Ressort du levier d'arrêt de sonnerie et du sautoir de l'étoile-commande | ○ 7255 | Spring for alarm stop lever and control star jumper |
| 7288   | Roue de déclenchement  | 7288   | Unlocking wheel                                     |
| 7289   | Roue intermédiaire de sonnerie   | 7289   | Intermediate wheel for alarm                        |
| 7290   | Roue de sonnerie   | 7290   | Alarm wheel   |
| 7291   | Roue d'enclenchement   | 7291   | Interlocking wheel                                  |
| 7315   | Ressort de friction de roue de déclenchement                             | 7315   | Friction spring for unlocking wheel                 |
| 7405/1 | Tige de mise à l'heure de sonnerie                                       | 7405/1 | Alarm setting stem                                  |
| ● 7411 | Ressort de tige de mise à l'heure de sonnerie                            | ● 7411 | Spring for alarm setting stem                       |
| 7425   | Noyau de roue de couronne intermédiaire de sonnerie                      | 7425   | Intermediate crown wheel core for alarm             |
| 7459   | Déclencheur  | 7459   | Disconnecter  |
| 7460   | Levier-déclencheur   | 7460   | Disconnecting lever                                 |
| 7461   | Ressort du levier-déclencheur  | 7461   | Disconnecting lever spring                          |
| 7465   | Commande du levier d'arrêt de sonnerie                                   | 7465   | Control piece for alarm stop lever                  |
| 7466   | Levier d'arrêt de sonnerie   | 7466   | Alarm stop lever                                    |
| 7485   | Commande du verrou de sonnerie   | 7485   | Alarm bolt lever                                    |
| 7492   | Clavette de la commande du verrou de sonnerie                            | 7492   | Alarm bolt lever gib                                |
| 7496   | Verrou de sonnerie   | 7496   | Alarm bolt  |
| 7498   | Marteau de sonnerie  | 7498   | Alarm hammer  |
| 7771   | Ressort de barillet de sonnerie (avec bride)                             | 7771   | Alarm mainspring (with bridle)                      |

**Pour:** Arbre de barillet sonnerie  
 Axe de barillet sonnerie  
 Cliquet-ressort sonnerie  
 Couronne intermédiaire sonnerie  
 Rochet de sonnerie

Voir fournitures mouvement  
 See movement parts

**For:** Alarm drilled barrel arbor  
 Alarm threaded axle for barrel  
 Alarm clicking spring  
 Intermediate crown wheel for alarm  
 Alarm ratchet wheel

● Ces fournitures n'existent pas dans les mécanismes de sonnerie des cal. 240-240/1. Voir page 6.  
 ○ Pour emploi sur calibres 240 et 240/1, voir page 6.

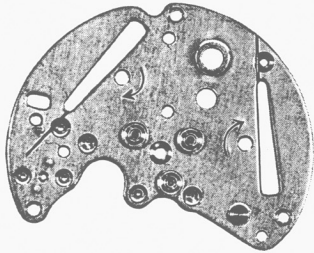
● These parts do not exist in the alarm mechanisms, of cal. 240-240/1. See page 6.  
 ○ For use on calibres 240 and 240/1, see page 6.

# Cal. 245

LE COULTRE

## Fournitures spéciales

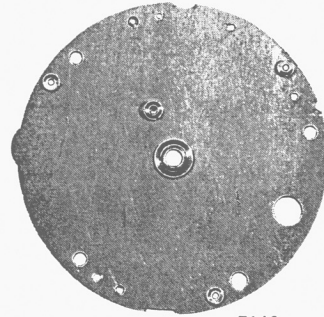
## Special parts



106



461



7146

106 3/4 platine  
**Important:** préciser exécution pour mouvement 7 ou 15 pierres

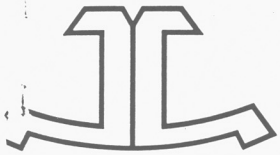
461 Ressort de bascule de roue de couronne  
7146 Couvre-platine dessous

106 3/4-plate bridge  
**Important:** state the movement has 7 or 15 jewels

461 Crown wheel rocker spring  
7146 Lower plate cover

Pour toutes les autres fournitures du cal. 245, consulter les pages 3, 4 et 5.

For all the other parts of caliber 245, see the pages 3, 4 and 5.



# JAEGER-LECOULTRE

## Repair notes

---

### Calibre 240

Automatic 8 days alarm "Recital"

### Calibre 245

8-day table clock

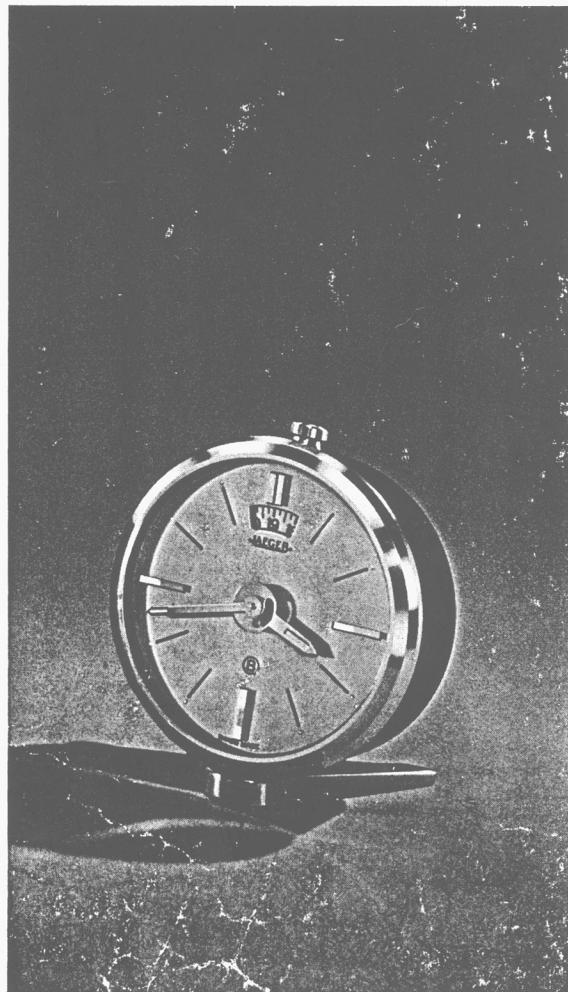
---

Cal. 240 and 245

- Ten days minimum reserve of going time.

Cal. 240

- Movement and alarm wound by single key.
- Automatic alarm ringing every 24 hours.
- Power reserve for 14 ten-second rings.
- Facility on certain models for stopping alarm instantaneously by hand, with automatic release for the next alarm ring.
- Means of stopping automatic alarm ringing for an indefinite period.



# Calibres 240 and 245

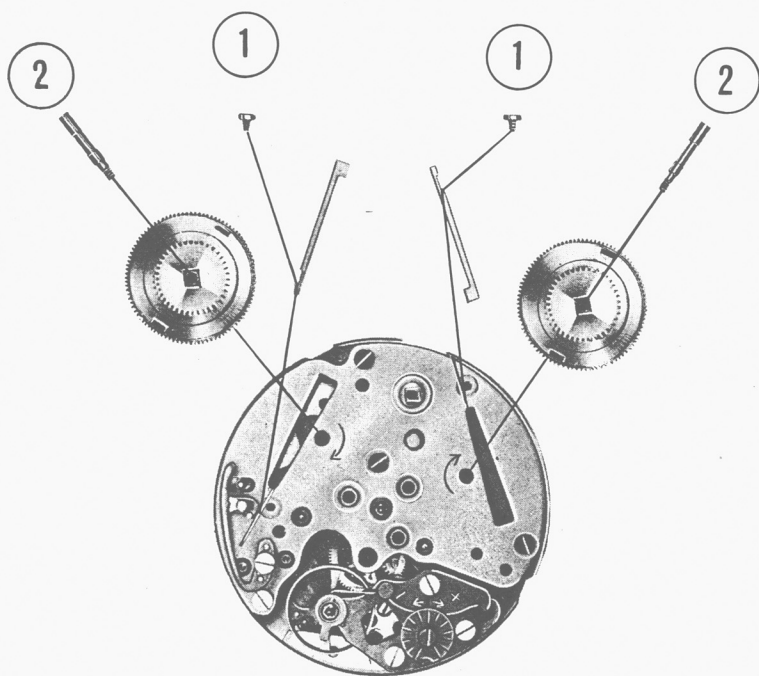
## Characteristics

## Dimensions:

Plate diameter: 42.90 mm  
Bell diameter: 43.40 mm  
Total height over bridges: 14.50 mm  
Total height over bell: 16.30 mm

## Movement:

8 days. Effective reserve of going time: more than 10 days.  
Special design giving rational utilisation of small volume movement.



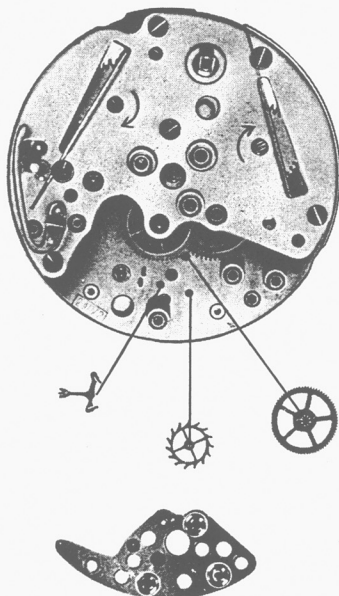
## Winding mechanism:

A single key enables both barrels to be wound; in one direction the barrel for the going part of the movement is wound, while the other is the alarm barrel (Cal. 240). This key is particularly robust; it is located well away from the centre of the bell, which avoids any accidental displacement of the hands during winding.

## The barrels:

A very simple device enables both barrels to be removed easily from the movement **without dismantling the wheel trains**.

- ① Let down the barrel and take out the clicking-spring.
- ② Undo the barrel axle screw (left-hand thread). Remove the barrel sideways.



## Escapement

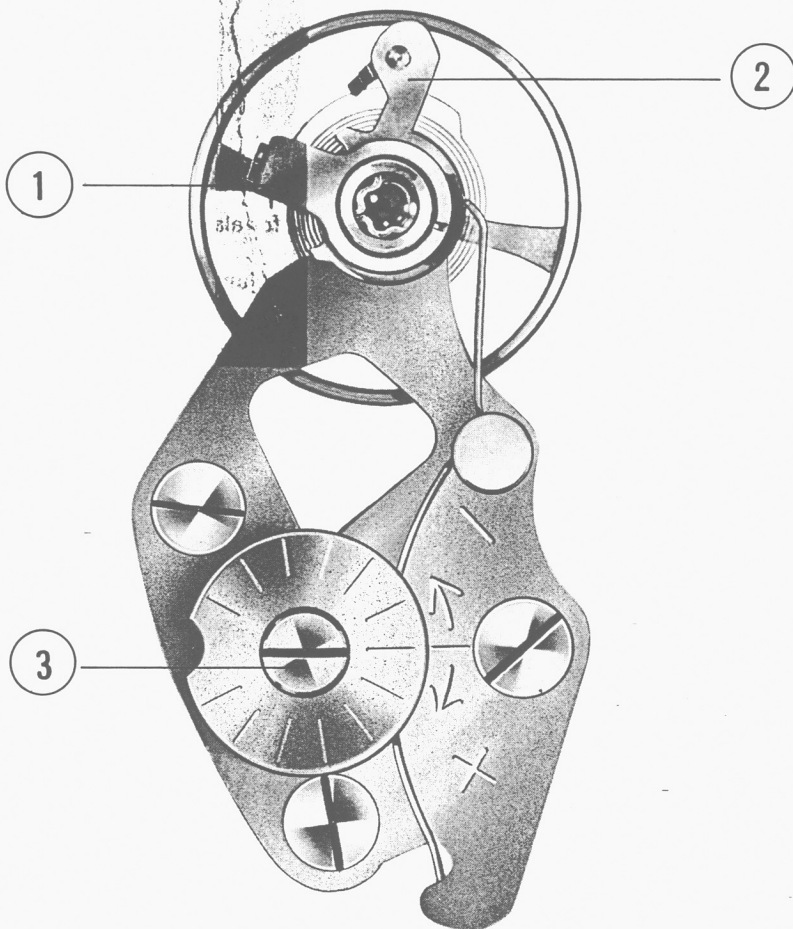
**The fourth wheel and the escapement** (wheel and pallets) can be dismantled independently of the barrels and alarm mechanism, enabling this part to be serviced quickly.

**The pallet frame** is made of a special light alloy—to the best of our knowledge, for the first time—leading to improved efficiency owing to considerable reduction in its inertia.



# Calibres 240 and 245

Balance, balance spring and regulator contain important new features:



## The balance

This is of large diameter, without screws, and ensures a high rate of stability.

## Balance jewellery

This consists of "Duofix" units, both being removable from the bridge side of the movement. In this way, it is possible to clean rapidly the "Duofix" which is pressed into the plate without removing the dial.

## The regulator:

This has been specially designed to improve the performance of the balance and spring.

- Regulator pin replaced by special spring support eliminating isochronal errors present in conventional regulators.
- Outer spring termination by clamping in "Spirotor" spring carrier—no stud is used. This device facilitates assembly of balance into movement, and setting in beat ①.
- Patented regulating device enabling:
  - quick adjustment to rate by regulator ②.
  - fine adjustment within  $\pm 1$  minute per day from outside the case ③.

## Assembling the balance into the movement:

- 1 Put the balance and spring into the movement as one would any wheel, without first securing the balance spring to the cock (going barrel unwound). In the natural position the balance spring should have the form shown in Fig. 1.
- 2 Turn the regulator key so as to be free of the spring; make sure that the jaws of the spirotor are open.
- 3 Mount the balance cock on the movement.
- 4 Rotate the balance until the roller jewel is engaged with the fork and engage the end of the balance spring with the jaws of the Spirotor.
- 5 Tighten the Spirotor clamping screw slightly, so that the spring may be set parallel to the plane of the cock plate. This will be easier if the spring extends slightly beyond the jaws (Fig. 2); then tighten the screw.

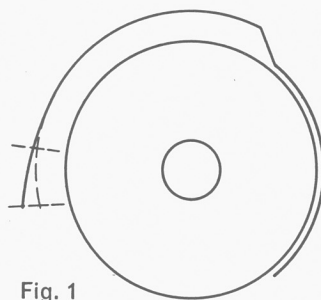


Fig. 1

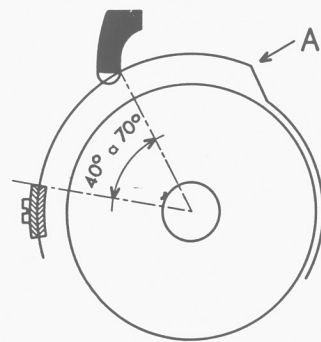


Fig. 3

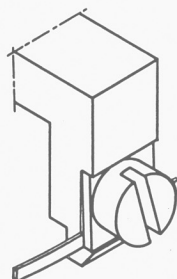


Fig. 2

## Adjusting pressure of regulator key against spring:

Rotate the balance until it reaches the end of its possible supplementary arc (about to "knock") in the direction in which the spring is wound up; move the regulator stud or key until it just comes into contact with the spring, and then release the balance (Fig. 3). If it is necessary to centre the spring it should only be corrected near to point A. When all manipulation of the spring is finished, check again that the regulator key or stud is bearing correctly.

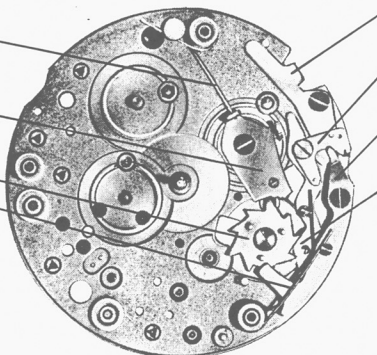
# To make repairing easier

4 pre-assembled units are available

## Pre-assembled Plate (Calibre 240)

Ref. 20

- Disconnecting lever spring
- Disconnecting lever
- Alarm control star
- Spring for alarm stop lever and control star jumper

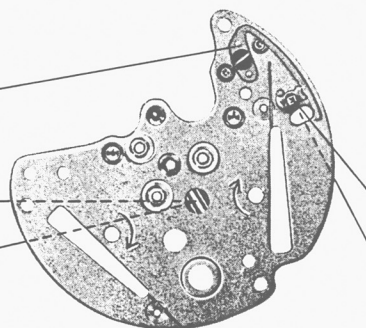


- Control piece for alarm stop lever
- Lifting piece for jumper
- Alarm stop lever
- Alarm control star jumper

## Pre-assembled 3/4 Plate (Calibres 240 and 245)

Ref. 21

- Alarm bolt
- Intermediate crown wheel for alarm
- Intermediate crown wheel core for alarm

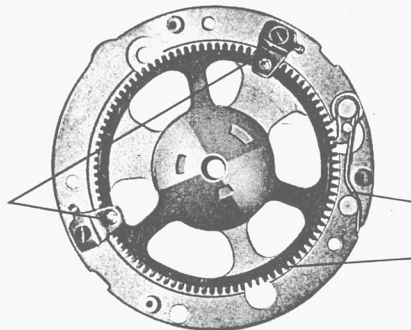


- Alarm bolt lever
- Alarm bolt lever gib

## Pre-assembled Unlocking Wheel Bridge (Calibre 240)

Ref. 23

- Friction spring for unlocking wheel

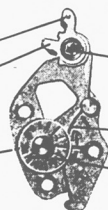


- Spring for unlocking wheel click
- Unlocking wheel

## Pre-assembled Balance Cock (Calibres 240 and 245)

Ref. 22

- Regulator for adjustable stud holder
- Spirotor balance-spring support
- Regulator adjuster gib



- Duofix for cock
- Regulator spring
- Adjuster for regulator

# Calibre 240

## Putting on the hands (after putting on the dial)

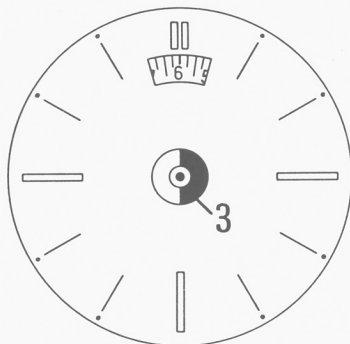


Fig. 4

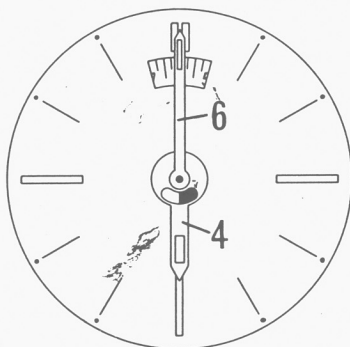


Fig. 5

1 Turn the alarm setting disc till the figure 6 appears in the window (6 a.m.).

2 Slowly rotate the set-hands control until the alarm releases. Take care to rotate it in the direction shown on the bell.

3 Put on the day-and-night indicator in the exact position shown in Fig. 4.

4 Put on the hour hand (Fig. 5).

5 Turn the set-hands control again; approach the time of alarm release very slowly so as to determine the instant of release with accuracy.

6 Put on the minute hand (Fig. 5) and check the accuracy of the alarm release.

### Lubrication

Balance, escape and fourth pivots only

All other pivots

Lifts

Other working parts

SYNTALUBE

CUYPERS I

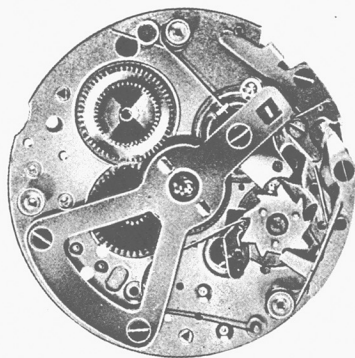
CUYPERS I

BLASOLUBE 302 grease

When ordering replacement pieces, please refer to the parts list for calibres 240 and 245, which gives complete details.

# Calibre 240

## Alarm mechanism

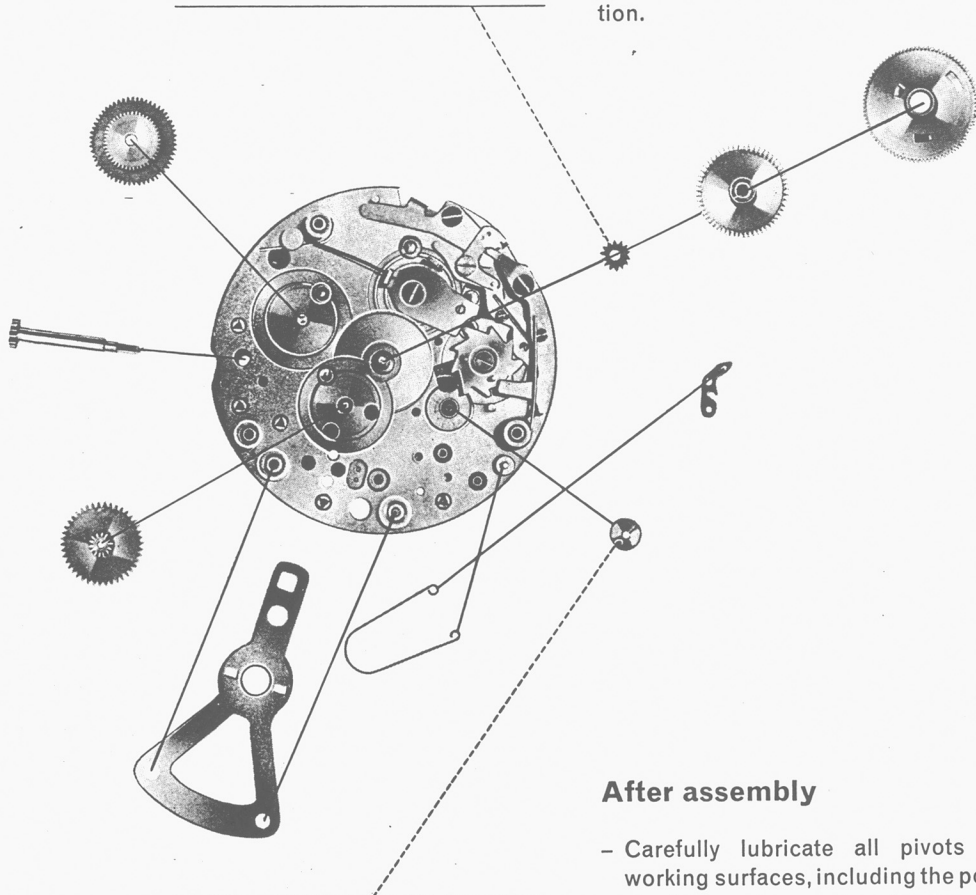


The mechanism for releasing the alarm and for limiting the duration of ringing involves only simple and robust components. Although the mechanism is complicated it has been possible, when establishing the design, to allow for wide manufacturing tolerances to avoid any correction during assembly.

### Assembling the alarm mechanism

During a complete cleaning, the mechanism must be dismantled to the extent shown below. If the plate has to be replaced, it may be supplied to the repairer ready assembled in this condition.

Cannon pinion pressed on to centre stem. First lubricate its bearing.



Disc pressed on level with pivot end. Take care with special form of hole. Lubricate bearing before pressing disc into position.

### After assembly

- Carefully lubricate all pivots and working surfaces, including the points at which springs act on the levers.
- **Check that all parts of the mechanism are perfectly free.**

### Lubrication

see following page

