

OMEGA



TECHNICAL GUIDE

No. 20 1960

CALIBRE 245 (R 13,5 T 1 PC AM 17 j.)



The chief purpose of this Guide is to stress the developments brought to calibre 244. This new calibre embodies all the technical improvements realised in course of the last few years and therefore ranks among the most modern watch movements.

CHARACTERISTICS

Measurements

Total diameter 18.00 mm
Outermost casing diameter 17.50 mm
Width 13.50 mm
Height 3.25 mm
Diameter of worm on winding stem 0.90 mm

Number of vibrations

19800 per hour

Ebauche

The thickness of plate has been increased for the winding stem hole to be entirely located within the plate; however, the thickness of bridges has been reduced in the same proportion.

Jewelling

Centre, third and fourth wheel jewels, upper and lower, and also the escape wheel jewel upper have been superseded by jewels of standard sizes.

Escapement

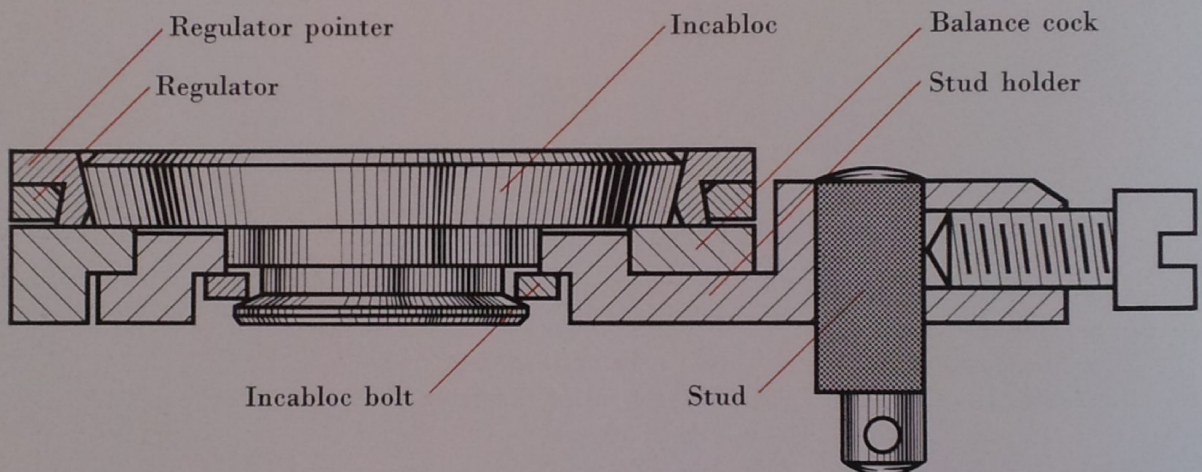
The banking pins have been done away with and replaced by limitation cheeks in the plate so as to obtain the utmost regularity in the functioning of the pallet from one movement to another.

Balance hairspring

The whole assembly is non-magnetic and includes a ring balance (screwless) in beryllium-bronze.

Shock-protecting device

Incabloc in which the diameter of the jewel-holes has been reduced in order to improve the extent of vibration of balance. The Incabloc lower is no longer fitted by a screw on the plate but merely pressure-set into position.



Movable stud-holder

Regulating device and plates

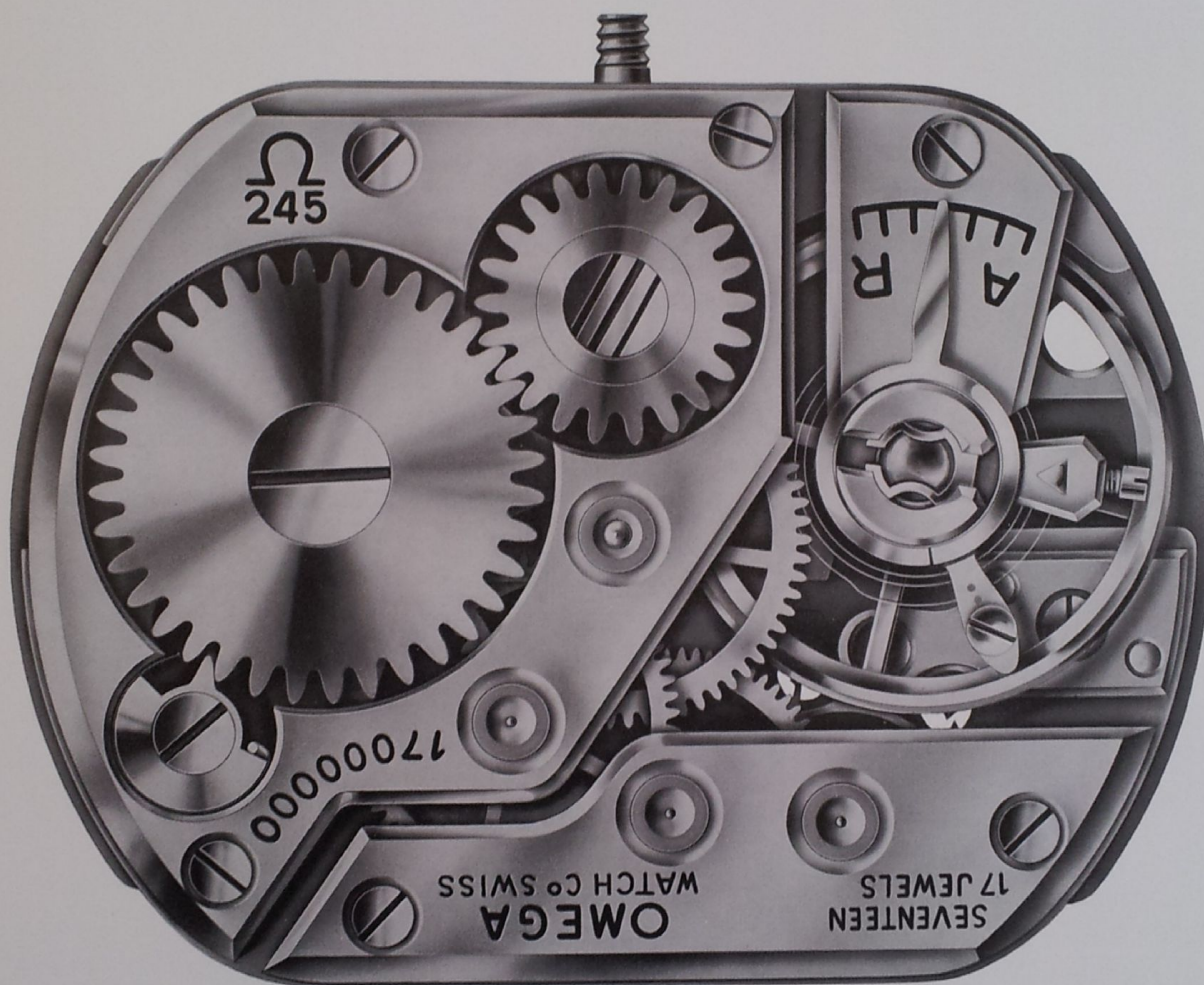
The movable stud-holder, the advantages of which are described in Technical Guide No. 13, has required a new regulator designed in two parts; it is fitted with two pins, between which the hairspring goes through, and with a regulator key, the duty of which is to prevent the hairspring from leaving the pins.

**Winding and
handsetting**

The thickness of the setting lever spring blade has been reduced so as to permit smoother handsetting. Such setting lever springs thus altered are also used in calibres 244 and 252.

Barrel

Includes a stainless mainspring thanks to the six turns of which the movement will run 45 hours instead of 38 previously.

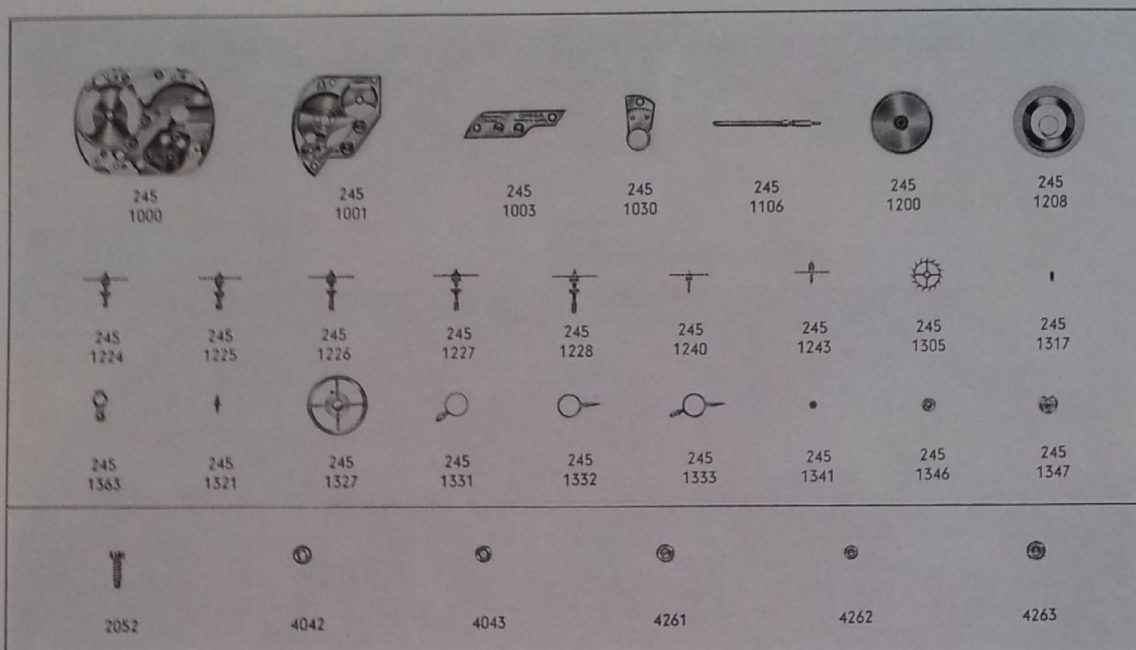


Gear-train

The number of balance vibrations reduced from 21 600 to 19 800 has called for a complete change in the wheel train. As a matter of fact, the third, fourth and escape wheels are no longer riveted but pressure-set on to their respective pinions.

SPARE PARTS

The repair parts lately turned out for this new calibre are:



<p>245.1000 Plate</p> <p>245.1001 Barrel bridge</p> <p>245.1003 Train wheel bridge</p> <p>245.1030 Cock (balance bridge)</p> <p>245.1106 Winding stem</p> <p>245.1200 Barrel with arbor</p> <p>245.1208 Mainspring</p> <p>245.1224 Centre wheel with cannon pinion, height 4.57</p> <p>245.1225 Centre wheel with cannon pinion H1, height 4.82</p> <p>245.1226 Centre wheel with cannon pinion H2, height 5.05</p> <p>245.1227 Centre wheel with cannon pinion H3, height 5.32</p> <p>245.1228 Centre wheel with cannon pinion H4, height 5.57</p> <p>245.1240 Third wheel</p> <p>245.1243 Fourth wheel</p> <p>245.1305 Escape wheel, pivoted</p> <p>245.1317 Hairspring stud</p>	<p>245.1363 Stud holder</p> <p>245.1321 Balance staff</p> <p>245.1327 Balance with hairspring</p> <p>245.1331 Regulator (regulator circle)</p> <p>245.1332 Regulator pointer (regulator body)</p> <p>245.1333 Two piece regulator</p> <p>245.1341 In-settings, upper and lower</p> <p>245.1346 Incabloc, lower</p> <p>245.1347 Incabloc, upper</p> <p>2052 Barrel bridge screw</p> <p>2052 Train bridge screw</p> <p>2052 Cock screw (balance bridge screw)</p> <p>4042 Centre wheel jewel, upper</p> <p>4043 Centre wheel jewel, lower</p> <p>4261 Third wheel jewel, upper</p> <p>4262 Third wheel jewel, lower</p> <p>4261 Fourth wheel jewel, upper</p> <p>4262 Fourth wheel jewel, lower</p> <p>4263 Escape wheel jewel, upper</p>
--	---