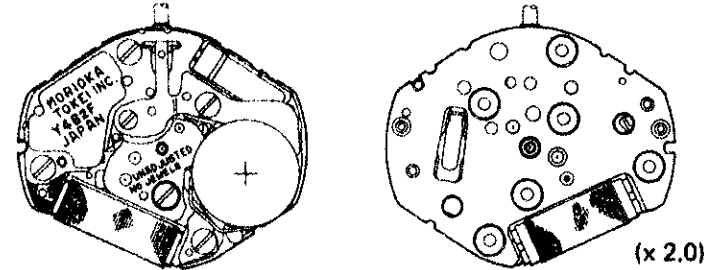


SERVICE GUIDE CAL. Y482F

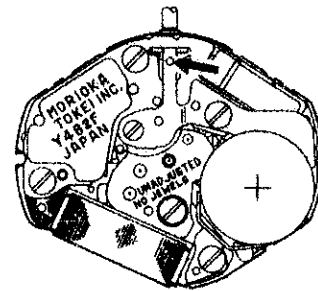
1. SPECIFICATIONS

Item		Cal. No.	Y482F
Movement			
Movement size	Outside diameter	18.4 mm (6H - 12H)	15.3 mm (3H - 9H)
	Casing diameter	17.8 mm	
	Height	2.8 mm	
Time indication		Two hands	
Driving system		Step motor (Load compensated driving pulse system)	
Additional mechanism		Electronic reset switch	
Loss/gain		Monthly rate: Less than 20 seconds at normal temperature range	
Regulation system		Nil	
Measuring gate by Quartz Tester		10-second gate	
Battery		SEIKO SR621SW MAXELL SR621SW SONY SR621SW EVEREADY 364 Voltage 1.55 V Battery life is approximately 2 years.	
Jewels		0 jewel	

2. NOTES ON REPLACING MOVEMENT

1) Winding Stem (Parts No. 351 112)

- The winding stem for Y482A/B/C cannot be used with Y482F. Therefore, when replacing the movement of the Y482A/B/C with that of Y482F, be sure to also replace the winding stem with that for Y482F.
- The type of winding stem is determined based on the design of case and dial. Check the case number and refer to "Casing Parts Catalogue" to choose a corresponding stem.

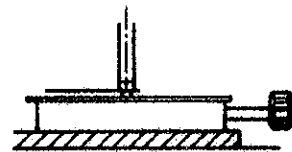


2) How to remove the winding stem

- Push the indented portion of the winding stem holder (See the upper right figure).

3) Hour and minute hands

- When installing hands, be sure to support the movement directly with a flat solid material (stainless steel plate etc.) and press in the hands.



3. VALUE CHECKING

- Current consumption

For the whole movement: less than 1.2 μ A